

824
SNOWBLOWER

OWNERS MANUAL
and
PARTS BOOK

Haybuster Model 824 Snow Blower

Page 2 Assembly Instructions

Page 3 Operation & Maintenance Instructions

Pages 4 thru 6 Parts Assembly

Page 7 Parts Power Take Off

Page 8 Parts Gear Box

Page 9 Notes

ASSEMBLY INSTRUCTIONS

1. Connect PTO shaft to gear box.
 2. Install discharge spout after lubricating top of stub ring.
 3. Use standard 8" stoke hydraulic cylinder (min. 20-1/4" pin center).
 4. With hydraulic cylinder completely retracted, and spout pointing away from cylinder, fasten cable to swivel arm ends and spout cable anchor. Be sure there is no slack in cable, and spout will not jam when rotated.
 5. Be sure to check oil in gear box before operating. (See lubrication)
-

OPERATORS INSTRUCTIONS

1. MOUNTING BLOWER ON TRACTOR

- A) **CAUTION** - The 3 point hitch on some tractors raises too high in the extreme "up" position which can cause the PTO shaft to bind. This can cause damage to the PTO shaft and/or to the hitch and pins.
- B) Care should be taken that there is free movement of all parts in the various raised positions.
- C) **NOTE** - We do not recommend operating the PTO in fully raised position.
- D) Depth of cut can be partially controlled by tilting the blower forward or backward.
CAUTION - Excessive backward tilt may cause "u" joint to flutter resulting in PTO shear bolt failure.

2. SHEAR BOLTS

- A) PTO shear bolt - 5/16" x 2" Gr. 5
- B) Auger drive shear bolt - 5/16" x 1-1/2" Gr. 5

Shear bolts should be secured either with (1) self locking nut or (2) jam nuts.

3. DRIVE CHAIN TENSION

- A) Slack on auger drive chain should not exceed 3/4" on side opposite tightener.

4. LUBRICATION

- A) Spout pivot should be periodically lubricated with grease gun to help prevent freezing and jamming.
- B) Gear box - Fill to approximately half way up on case with any good grade #90 gear lube.
- C) PTO shaft universal joints and slide should be greased daily.

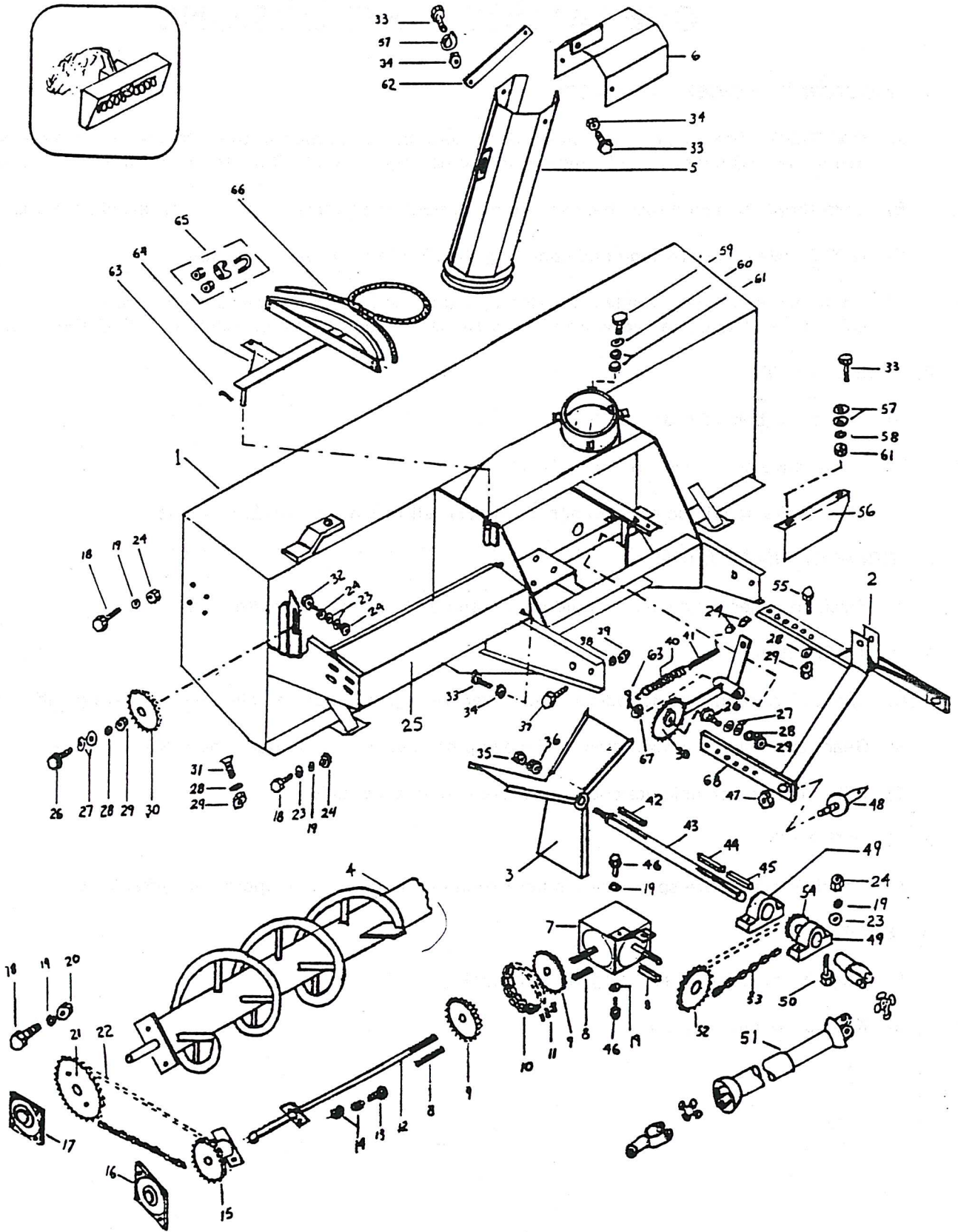
5. SPOUT PIVOT

- A) Check to make sure spout pivot is not frozen or jammed before operating hydraulically.

6. SAFETY

- A) Stop machine for all servicing and unplugging.
 - B) Keep all shields in place.
-

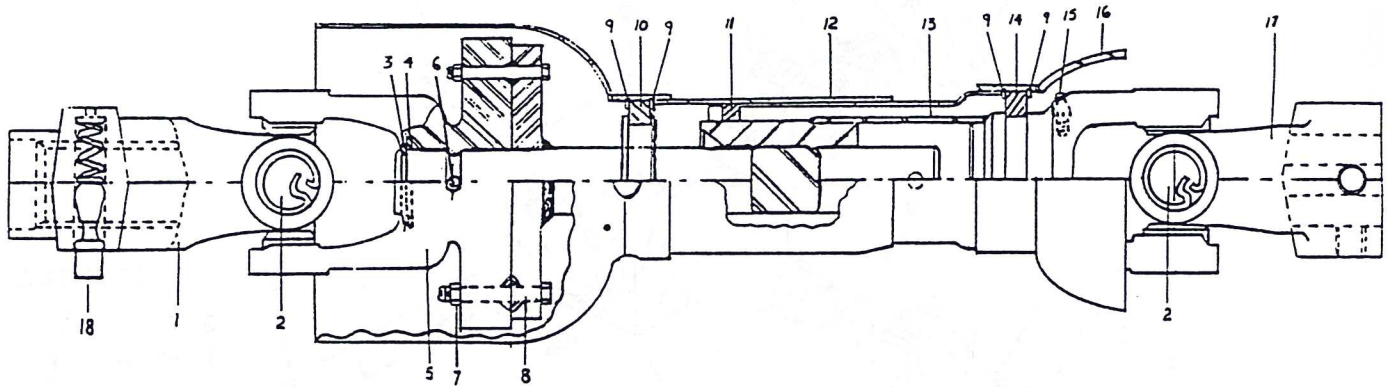
Single Auger Snowblower



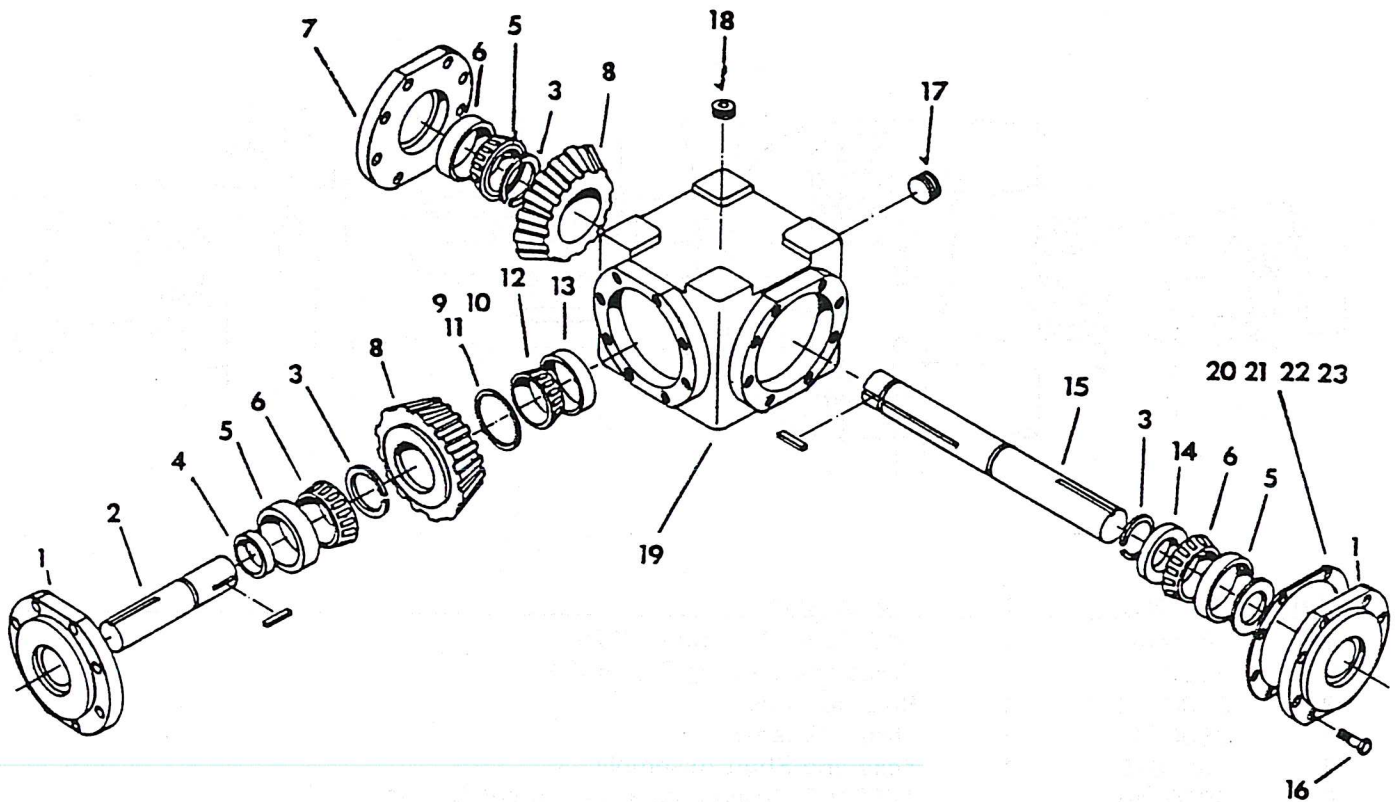
| Ref. | Part No. | Qty. | Description |
|------|-----------------------|------|--|
| 1 | 7900001 | 1 | Main Frame |
| 2 | 7900002 | 1 | 3-Point Hitch Assembly |
| 3 | 7900003 | 1 | Fan |
| 4 | 7900004 | 1 | Auger |
| 5 | 7900005 | 1 | Discharge Spout |
| 6 | 7900006 | 1 | Spout Deflector |
| 7 | 3100013 | 1 | Gear Box |
| 8 | 6200005 | 3 | 1/4" x 1/4" x 1-1/2" Sq. Key |
| 9 | 1000020 | 1 | 60B12 x 1-1/4" Bore Sprocket |
| 10 | 1100017 | 1 | 60-2-11 Coupler Chain |
| 11 | 1100067 64 | 1 | 60-2 Connector Link |
| 12 | 8000001 | 1 | Auger Drive Shaft |
| 13 | 4800081 | 1 | 5/16" x 1-1/2" Gr. 5 Hex Hd. Bolt |
| 14 | 4900003 | 2 | 5/16" Hex Nut |
| 15 | 1000079 | 1 | M60B15 x 1-1/4" Sprocket w/Shear Plate |
| 16 | 1900005 | 1 | 1-1/4" 4 Hole Flange Bearing |
| 17 | 1900003 | 2 | 1-1/2" 4 Hole Flange Bearing |
| 18 | 4800082 | 1 | 1/2" x 1-1/2" Gr. 5 Hex Hd. Bolt |
| 19 | 5000006 | 1 | 1/2" Lock Washer |
| 20 | 4900014 | 1 | 1/2" Lock Nut |
| 21 | 1000080 37 | 1 | M60A36 x 1-1/2" Sprocket |
| 22 | 1100068 | 1 | #60 - 101 Links and Conn. |
| 23 | 5000004 | 1 | 1/2" Flat Washer |
| 24 | 4900001 | 2 | 1/2" Nut |
| 25 | 7900007 | 1 | Auger Drive Shaft Shield |
| 26 | 4800021 | 1 | 5/8" x 3" Hex Hd. Bolt |
| 27 | 5000002 | 2 | 5/8" Flat Washer |
| 28 | 5000003 | 10 | 5/8" Lock Washer |
| 29 | 4900005 | 10 | 5/8" Hex Nut |
| 30 | 1000007 | 1 | #60 Sprocket Idler |
| 31 | 4800083 | 10 | 5/8" x 1-1/2" Plow Bolt |
| 32 | 4800084 | 1 | 1/2" x 5" Hex Hd. Ready Bolt |
| 33 | 4800003 | 2 | 3/8" x 1" Hex Hd. Bolt |
| 34 | 4900023 | 2 | 3/8" Lock Nut |
| 35 | 4900012 | 1 | 5/8" Lock Nut |
| 36 | 4900005 | 1 | 5/8" Nut |
| 37 | 4800033 | 4 | 3/4" x 2" Hex Hd. Bolt |
| 38 | 5000012 | 4 | 3/4" Lock Washer |
| 39 | 4900004 | 4 | 3/4" Hex Nut |
| 40 | 6100001 | 1 | Spring |
| 41 | 4800074 | 1 | Tension Adjustment Bolt |
| 42 | 6200006 | 1 | 3/8" x 3/8" x 4" Key |
| 43 | 8000002 | 1 | Fan Drive Shaft |
| 44 | 6200007 | 1 | 3/8" x 3/8" x 1-1/2" Key |
| 45 | 6200008 | 1 | 3/8" x 3/8" x 2" Key |
| 46 | 4800085 | 8 | 1/2" x 1" Hex Hd. Bolt |
| 47 | 4900024 | 2 | 1-1/8" N.F. Hex Nut |
| 48 | 4800086 | 2 | 3-Point Link Pins |

Snowblower Parts List

| Ref. | Part No. | Qty. | Description |
|------|----------|------|------------------------------|
| 49 | 1800001 | 2 | 1-1/4" P.B. Bearing |
| 50 | 4800007 | 1 | 1/2" x 2" Hex Hd. Bolt |
| 51 | 3600059 | 1 | P.T.O. Shaft Complete |
| 52 | 1000019 | 1 | 60B18 x 1-1/4" Bore Sprocket |
| 53 | 1100009 | 1 | #60 - 43 Links and Conn. |
| 54 | 1000034 | 1 | 60B15 x 1-1/2" Bore Sprocket |
| 55 | 4800010 | 2 | 5/8" x 2" Hex Hd. Bolt |
| 56 | 7900008 | 1 | Gear Box Drive Shield |
| 57 | 5000001 | 4 | 3/8" Flat Washers |
| 58 | 5000016 | 2 | 3/8" Lock Washer |
| 59 | 4800034 | 4 | 3/8" x 1-1/2" Hex Hd. Bolt |
| 60 | 5000017 | 4 | 3/8" Fender Washer |
| 61 | 4900002 | 8 | 3/8" Hex Nut |
| 62 | 7900009 | 1 | Deflector Adjustment Link |
| 63 | 4800050 | 1 | 3/16" x 1-1/2" Cotter Pin |
| 64 | 7900010 | 1 | Swivel Arm |
| 65 | 4800027 | 3 | 1/4" Cable Clamp |
| 66 | 5600006 | 1 | 1/4" Cable 68" Long |
| 67 | 5000018 | 2 | 1" I.D. Machine Bushing |
| 68 | 7900011 | 1 | Mounting Bracket |



| Ref. | Part No. | Qty. | Description |
|------|----------|------|---|
| 1 | 3600041 | 1 | 540 Quick Disconnect Yoke |
| 2 | 3600042 | 2 | Cross and Bearing Repair Kit |
| 3 | 3600043 | 1 | Retainer Ring |
| 4 | 3600044 | 1 | Thrust Washer |
| 5 | 3600045 | 1 | Yoke and Shaft Assembly |
| 6 | 3600046 | 1 | 1/8" P.T. Straight Zerk w/Ball and Spring |
| 7 | | 1 | 5/16" - 18 Lock Nut |
| 8 | | 1 | 5/16" - 18 x 2" Cap Screws Grade 5 |
| 9 | 3600047 | 4 | Retainer Ring |
| 10 | 3600048 | 1 | Nylon Bearing (Outer) |
| 11 | 3600049 | 1 | Nylon Centralizer |
| 12 | 3600050 | 1 | Outer Shield |
| 13 | 3600051 | 1 | Yoke and Tube Assembly |
| 14 | 3600052 | 1 | Nylon Bearing (Inner) |
| 15 | 3600053 | 1 | 1/4" Straight Thread Zerk |
| 16 | 3600054 | 1 | Inner Shield |
| 17 | 3600055 | 1 | 1-1/2" Round Bore Yoke |
| 18 | 3600056 | 1 | Quick Disconnect Pin and Spring |
| 19 | 3600057 | 1 | Tractor Half Complete |
| 20 | 3600058 | 1 | Machine Half Complete |
| 21 | 3600059 | 1 | 35W P.T.O. Complete |



| Ref. | Part No. | Qty. | Description |
|------|----------|------|-----------------------|
| 1 | 3100001 | 2 | Cap, 412 |
| 2 | 3100002 | 1 | Shaft, 412 |
| 3 | 3300001 | 2 | Snap Ring |
| 4 | 3200001 | 2 | Seals, 412 |
| 5 | 2000011 | 3 | Bearing Cone |
| 6 | 2000012 | 3 | Bearing |
| 7 | 3100003 | 1 | Blank Cap |
| 8 | 3100004 | 2 | Gear |
| 9 | 3100005 | var. | Shim .002 |
| 10 | 3100006 | var. | Shim .005 |
| 11 | 3100007 | var. | Shim .010 |
| 12 | 2000013 | 1 | Bearing |
| 13 | 2000014 | 1 | Bearing Cone |
| 14 | 3100008 | 1 | Thrust Collar |
| 15 | 3100009 | 1 | Shaft |
| 16 | 3100010 | 24 | Cap Screws |
| 17 | 3100011 | 2 | Plain Plugs |
| 18 | 3100012 | 1 | Vented Plug |
| 19 | 3100013 | 1 | 412 Gear Box Complete |
| 20 | 3500004 | var. | Gasket .002 |
| 21 | 3500003 | var. | Gasket .003 |
| 22 | 3500002 | var. | Gasket .005 |
| 23 | 3500001 | var. | Gasket .015 |

